

If you self-identify as Aboriginal or have Aboriginal Ancestry and you have cancer

Cancer care: the journey brings with it many questions and concerns



What does this all mean for me and my family?

An **Aboriginal Patient Navigator** can help you through this journey by bridging the culture of cancer care and treatment with aboriginal culture and your traditions.

Deena can meet with you at the Cancer Centre in Hamilton, St. Catharines, Brantford, Burlington, in the hospital or in your community.



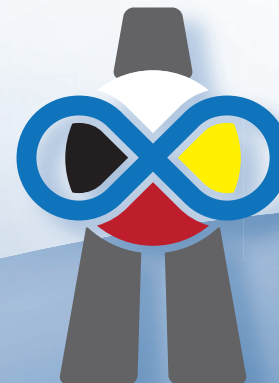
Call:
905-387-9711 Ext 63312
Weekdays from 9 am to 5 pm

Email:
klodtdee@hpsc.ca

Or ask your family doctor to call

The **Aboriginal Patient Navigator**, can help you to:

- get started on the journey and move through the health care system
- communicate your needs with doctors and nurses
- understand the medical language of cancer
- arrange language and cultural translation services
- connect with traditional Aboriginal healers and elders
- understand your Health Benefits



 Juravinski
Hospital and
Cancer Centre