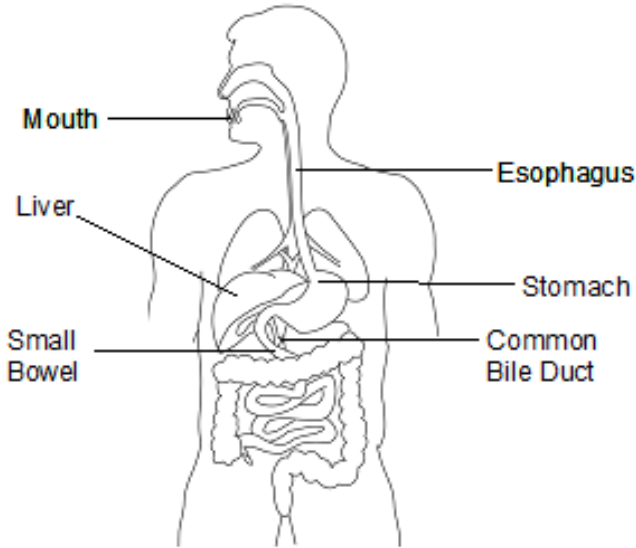


# ERCP (Endoscopic Retrograde Cholangiopancreatography)



Your doctor has recommended that you have an ERCP. This pamphlet gives you information about the ERCP, its benefits and risks. If you have any questions after reading it, you will be able to ask them at your appointment.

Endoscopic retrograde cholangiopancreatography, or ERCP, is a procedure used to look at the bile ducts, pancreatic duct and gallbladder.

## About ERCP

A flexible tube (with a camera on the end) is placed in your mouth and guided down your throat, esophagus, stomach, and small bowel to the ampulla. A smaller plastic tube is passed through the scope into the ampulla. Dye is then injected through the tube and X-rays are taken to study the bile and pancreatic ducts.

Treatments may be performed during the ERCP, including:

- A widening of the opening of the bile duct
- Removal of gallstones from the bile duct
- Insertion of a small plastic tube for drainage of bile

## Possible complications

Most ERCPs are done without any problems. There are some risks to having an ERCP. Possible complications include:

- Pancreatitis (inflammation of the pancreas)
- Perforation or injury of the esophagus, stomach, small bowel or ducts that may need surgery to fix
- Infection of the bile ducts
- Bleeding

Your doctor will explain these complications in more detail. Any complication could mean you need to stay in the hospital for treatment.

## Before your ERCP

Do not eat or drink anything after midnight before your procedure. This includes candies and chewing gum.

## Medications

Take your usual medications on the day of the ERCP with sips of water.

Your doctor may not want you to take blood thinners or diabetes medications, and will discuss this with you.

## Bring to the hospital

- Bring a list of your medications and allergies with you.
- If you have diabetes, check your blood sugar as usual. Bring the results to the hospital.

## Special instructions

---



---



---

## During your ERCP

Your throat will be sprayed with a local anesthetic before the test begins. An intravenous line (IV) will be placed to give medication to make you relax and more comfortable.

During the ERCP, you will be lying on your stomach on an x-ray table and the tube will be gently passed through your mouth, down your esophagus and into your stomach and duodenum.

The endoscope does not interfere with your breathing. Most patients fall asleep during the procedure or find it only slightly uncomfortable. You may feel temporarily bloated during and after the procedure due to the air used to inflate the duodenum.

The doctor will tell you what he or she is doing. There will be a nurse in the room and your blood pressure, heart rate and oxygen will be watched. The nurse will be helping you and the doctor.

## After the procedure

You will stay in the recovery area until you are awake and ready to go home.

Rest for the remainder of the day. You may have minor problems such as bloating or cramping, but should go away within 24 hours.

You will be given instructions on how to care for yourself when you get home.

## Arrange a ride home

An ERCP takes about 30 to 60 minutes. Plan to be at the hospital for about 1 to 3 hours, from start to finish.

To go home safely after sedation, an adult must pick you up in the Endoscopy Room and take you home.

For 24 hours after the ERCP you cannot:

- drive a vehicle
- ride on a motorcycle
- operate machinery
- drink any alcohol
- make major or legal decisions

## Patient Education

Patient Education videos are available from San Jose Gastroenterology.

[http://sjgi.com/video\\_Endoscopic\\_Retrograde\\_Cholangiopancreatography.html](http://sjgi.com/video_Endoscopic_Retrograde_Cholangiopancreatography.html)

For more information about ERCP:

<http://patients.gi.org/topics/ercp-a-patients-guide/>

---

## Where to go for your ERCP

Date \_\_\_\_\_.

Come to the hospital at \_\_\_\_\_.

### **Hamilton General Hospital**

Check in at Patient Registration on the Main Level.

Then go to Endoscopy on the Main Level.

Phone: 905-521-2100, ext. 44932

### **Juravinski Hospital**

Check in at Patient Registration on the main floor.

Then go to Section B, Level 3, Endoscopy Department.

Phone: 905-521-2100, ext. 42334

### **McMaster University Medical Centre**

Check in at Patient Registration on the main floor. Then take the yellow elevators to the 4th floor. Turn left and follow the hallway to the 4X area on the left.

Follow the signs to Endoscopy, and check in at the reception desk.

Phone: 905-521-2100, ext. 76924

## Questions and appointment changes

- If you have questions about the procedure, please call the doctor who ordered your ERCP.
- If you need to change/cancel your appointment, please call the hospital where you are having your procedure.