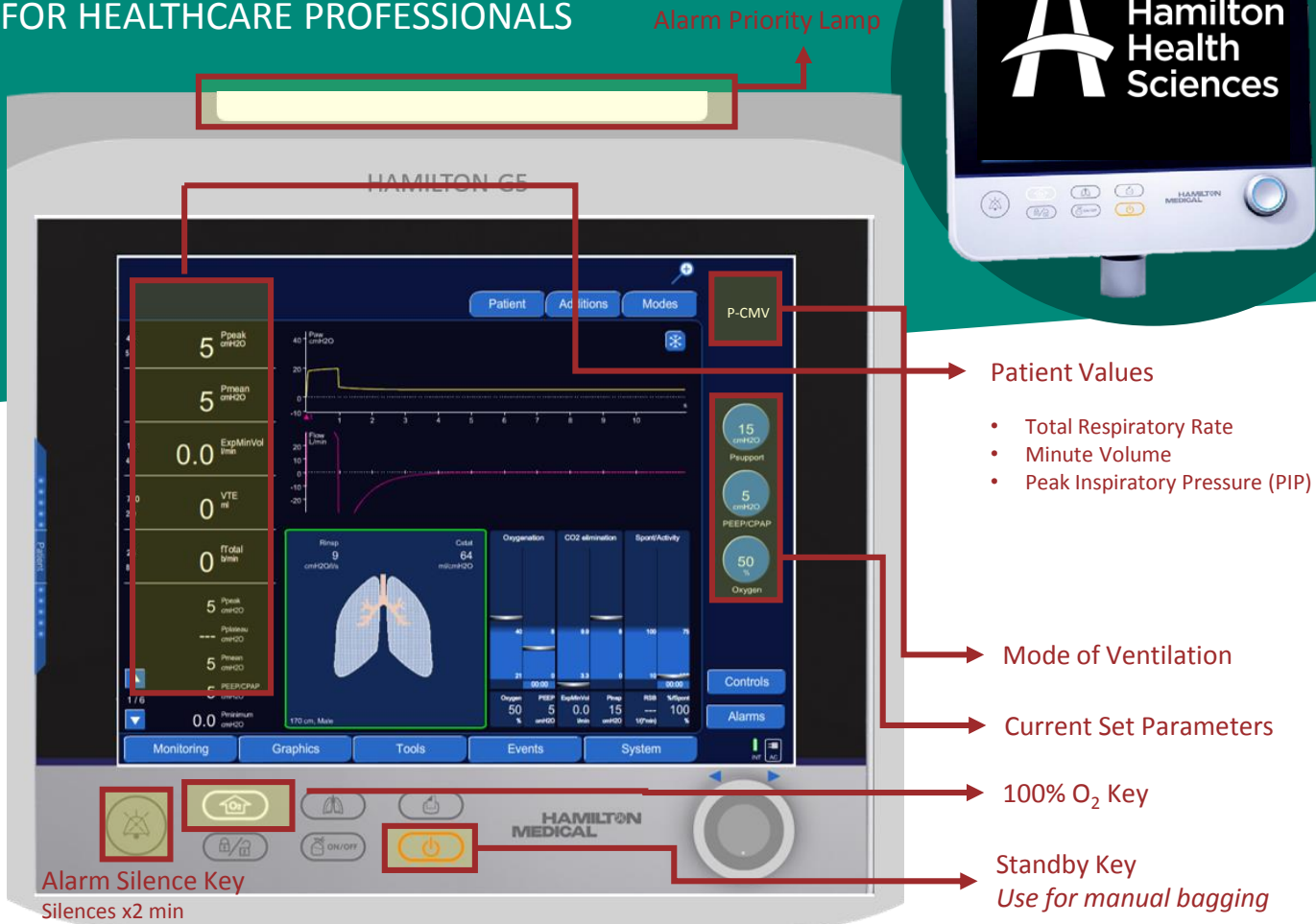


HAMILTON- G5 CRITICAL CARE VENTILATOR

QUICK REFERENCE GUIDE

FOR HEALTHCARE PROFESSIONALS



TROUBLESHOOTING ALARMS

HIGH

MEDIUM/LOW

- Identify the alarm (audible/visual indicator + alarm message bar)
- Press 'Alarm Silence' while troubleshooting
- Use the 100% O₂ button if necessary
- Attempt to determine the cause of the alarm (start at patient → circuit → ventilator)
- Attempt to correct the alarm condition
- If unable to correct:
 - Activate standby
 - Manually bag patient via ETT
 - Call RT



Call RT

(non-emergent issues)



TEXT PAGER

- Select *PHONE* icon to open
- Type in *RT* or *Respiratory Therapist* & scroll to find your work area
- Select the person you want to page
- Click on 'Send a Page' to populate the message field

PAGE BY PHONE

- Call Paging (or dial 87) and enter the RT pager number associated with the unit
- Enter a priority level (*), then press # to confirm

Non-Invasive and Invasive Mechanical Ventilation

NON-INVASIVE VENTILATION	OTHER NAME	TYPE OF SUPPORT	WHAT IS SET			VARIABLES / NOTES
			RATE	FIO ₂	PEEP	
Bi-Level Positive Airway Pressure	Bi-PAP [®]	Spontaneous Breathing	NO	YES	IPAP EPAP	<ul style="list-style-type: none"> • IPAP: Helps with CO₂ removal; EPAP: Oxygenation • Patient is awake; stable, intact respiratory drive

INVASIVE VENTILATION	OTHER NAME	TYPE OF SUPPORT	WHAT IS SET			VARIABLES / NOTES
			RATE	FIO ₂	PEEP	
Assist Control (Volume)	AC, VC	Full	YES	YES	YES	<ul style="list-style-type: none"> • Guaranteed tidal volume (V_t) • Trend pressures
Assist Control (Pressure)	PC	Full	YES	YES	YES	<ul style="list-style-type: none"> • Peak pressure limit (PIP) set • Trend volumes
Airway Pressure Release Ventilation	APRV (Bi-Level)	Full	YES	YES	YES	<ul style="list-style-type: none"> • Two levels of pressure: P-high, P-low • Two time intervals: T-high, T-low • Inhalation: High pressure, long time; exhalation: low pressure, short time
Pressure Regulated Volume Control	PRVC	Full	YES	YES	YES	<ul style="list-style-type: none"> • Delivers set tidal volume with lowest amount of pressure
Pressure Support Ventilation	PSV	Spontaneous Breathing	NO	YES	YES	<ul style="list-style-type: none"> • Patient determines own rate and tidal volume (V_t) • NO set respiratory rate; may need to switch mode if apnea occurs